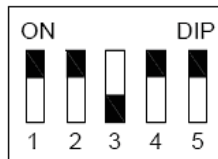


Different capacities of same model of AHU-KIT unit are achieved through dialing capacity code of mainboard (shown as "S1"). Capacity code setting is shown as follows:

S1					Capacity (kW)
1	2	3	4	5	
0	1	0	0	0	2.8
0	0	1	0	0	3.6
0	1	1	0	0	4.5
0	0	0	1	0	5.6
0	1	0	1	0	7.1
0	0	1	1	0	9
0	1	1	1	0	11.2
0	0	0	0	1	14
1	1	0	0	1	22.4
1	0	1	0	1	28
0	1	1	0	1	33.5
0	0	0	1	1	40
1	0	0	1	1	45
0	1	0	1	1	50.4
1	1	0	1	1	56
0	0	1	1	1	84

Please ensure dialing the code switch properly in place instead of middle position. Setting the switch to "ON" stands for "0", otherwise stands for "1".



(Notes: The black part is the deflector rod.) The figure shows that the addresses of "1,2,3,4,5" are "0,0,1,0,0".



Notes:

- ① The selected air handling unit must be designed for R410A.
- ② Extraneous substances (including mineral oils or moisture) must be prevented from getting mixed into the system.